

LABELMATE USA

Label Handling Innovations

JUNE 2015

◆ REWINDERS



◆ DISPENSERS



◆ REEL-TO-REEL COUNTERS



◆ REEL-TO-REEL PRINTER



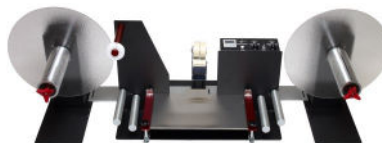
◆ REEL-TO-REEL REWINDERS



◆ LABEL HANDLING PACKAGES:



SLITTING



SPLICING



COUNTING

◆ UNWINDERS



◆ CORE CHUCKS



◆ APPLICATORS



<u>REWINDERS</u>	10
<u>DISPENSERS</u>	20
<u>UNWINDERS</u>	22
<u>CORE CHUCKS</u>	32
<u>REEL-TO-REEL COUNTERS</u>	7
<u>REEL-TO-REEL PRINTER</u>	25
<u>REEL-TO-REEL REWINDERS</u>	11
<u>BOTTLE LABEL APPLICATORS</u>	4
<u>LABEL HANDLING PACKAGES:</u>	
<u>SLITTING</u>	28
<u>SPLICING</u>	6
<u>COUNTING</u>	8

UP TO 5-YEAR WARRANTY!

CALL TOLL FREE 877.833.7149

www.labelmateusa.com

LABELMATE USA

Label Handling Innovations

ABOUT US

Since 1997 LABELMATE USA has been the World's Leading Manufacturer of desk-top label handling products, including Rewinders, Counters, Unwinders, Dispensers, Slitters, Splicers and Core Chucks. Today, we are proud to say there are more than 80,000 LABELMATE Units working perfectly in over 70 countries around the world.

We are constantly developing new products to meet our customers' requirements. As our business has grown, so has our reputation for providing the most trusted, rugged and reliable label handling products. The LABELMATE USA name is recognized globally and is synonymous with quality in the industry. We thank you for your business and will continue to provide you with the best in Label Handling Innovations.

HIGHLIGHTS

- ◆ **Support & Service** - We offer FREE lifetime technical support for all of our products worldwide. Call Toll Free **877.833.7149**, or email support@labelmateusa.com.
- ◆ **Warranties:**
 - ◆ Rewinders & Unwinders: 5 Year Parts and Labor Limited Warranty (**Longest in the Industry!**)
 - ◆ Counters, Dispensers, Slitters, Reel-to-Reel Machines, P-300, PM-300, and Quick-Chucks: 3 Year Parts and Labor Limited Warranty.
 - ◆ Power Supplies, Adaptors, Transformers, Counter Modules, Encoders: 1 Year Parts and Labor Limited Warranty
- ◆ **Customizing/OEM/Private Label** - We do it all! Please contact our sales team and technical development department for questions about special requirements Toll Free **877.833.7149**, or email sales@labelmateusa.com.

WHAT'S NEW & HOT!



- ◆ **BOTTLEMATE** Label Applicators for applying labels to bottles and other cylindrical objects! (pgs. 4-5)
- ◆ **RRS-8** Label Splicing System designed for combining label rolls! (p. 6)
- ◆ **BP-LD** Make your Label Dispenser mobile with the new BP-LD Battery Pack! (p.21)
- ◆ **C76-330** Quick-Locking Core Chuck for rewinding/unwinding material up to 13" (330-mm) wide! (p. 32)

For questions, comments or requests about any of our products contact us at

877.833.7149

info@labelmateusa.com

Contents

ABOUT LABELMATE USA	2
BOTTLEMATE LABEL APPLICATORS	4
RRS-8 LABEL SPLICING PACKAGES	6
LABEL COUNTERS AND COUNTING PACKAGES	7
Digital Reel-to-Reel Counters.....	7
Digital Label Counting Packages	8
Digital Stand-Alone Label Counters.....	9
LABEL REWINDERS	10
Reel-to-Reel Rewinders.....	11
MC-10A / MC-11 (“MINI-CAT”) Rewinders.....	12
CAT-3 Rewinders - 12” Roll Capacity.....	13
CAT-3 Rewinders - 16” & 18” Roll Capacity.....	14
CAT-40G Gear-Driven Rewinder.....	15
CAT-3SA Sensor Arm Rewinders.....	16
CAT-3L Loop Rewinder / Unwinder.....	17
TWIN-CAT-3 Dual-Spindle Rewind / Unwind Stations.....	18
Label Inspection and Counter Options, TWIN-CAT-3.....	19
LABEL DISPENSERS	20
BP-LD Mobile Battery Pack.....	21
LABEL UNWINDERS	22
Powered Label Unwinders.....	23
Non-powered Label Unwinders.....	24
P-300 REEL-TO-REEL INKJET LABEL PRINTER	25
PM-300 REEL-TO-REEL PRINT TRANSPORT	27
LABEL SLITTERS AND SLITTING PACKAGES	28
TWIN-SLIT Dual-Spindle Slitting Packages.....	28
Off-Line Slitting Packages.....	29
Stand-Alone Label Slitters.....	30
Label Slitting Separator Plates and Accessories.....	31
QUICK-LOCKING “QUICK-CHUCK”™ CORE CHUCKS	32
GENERAL INFORMATION	33



Manual BOTTLEMATE Bottle Label Applicator

Manually Apply Labels to Bottles and Other Cylindrical Objects!

If you are looking for a simple and versatile solution for applying labels to bottles, cans, jars or other cylindrical objects but you don't want to spend a fortune, look no further! The BOTTLEMATE-712M is the Label Applicator you need! A quick turn of the handle is all that is required to accurately and consistently place labels in the same location on all of your cylindrical objects. With the BOTTLEMATE-712M you will be able to easily label cylindrical objects with diameters ranging from 0.3" (7.5-mm) to 12" (305-mm) (size of a pen up to gallon sized containers).

The BOTTLEMATE-712M is constructed of heavy-duty steel and other industrial grade materials and will withstand the most high volume production environments. Backed by Labelmate's unparalleled 3 year parts and labor limited warranty this unit is built to last. Choose BOTTLEMATE by Labelmate for convenience and reliability at an industry-leading low price!



BOTTLEMATE-712M

Detail: BOTTLEMATE-712M applying labels to a bottle.



BOTTLEMATE-712M Quick Facts:

- Manual Bottle Labeler that quickly and easily applies labels to bottles, cans, jars or other cylindrical objects.
- Accurately and consistently places labels in the same location.
- No tools required for adjustment for different label sizes.
- Heavy-Duty industrial grade construction.
- No maintenance required.
- 3 year Parts and Labor Limited Warranty.
- Overall Dimensions (HWD): 13.5"x24"x12".
- Weight: 20lbs (9.07kg).

MAXIMUM LABEL WIDTH	MINIMUM LABEL WIDTH	MAXIMUM LABEL LENGTH	MAXIMUM ROLL DIAMETER	CORE DIAMETER	MAXIMUM BOTTLE DIAMETER	MINIMUM BOTTLE DIAMETER	PRICE
7" (178-mm)	0.25" (6.35-mm)	37" (940-mm)	12" (305-mm)	1" - 6" (25-mm - 153-mm)	12" (305-mm)	0.3" (7.5-mm)	\$675

Free consultation 1-877-833-7149
www.labelmateusa.com

Automatic BOTTLEMATE Bottle Label Applicators



**Automatically Apply Labels to Bottles and Other Cylindrical Objects
with the touch of a button!**

The Automatic BOTTLEMATE Series by Labelmate enables you to label all kinds of cylindrical items by simply inserting the item and pressing a foot switch. Once the foot switch is activated the label is applied at over 4.5" per second, and most items are labeled in less than 2 seconds! This allows you to quickly remove the item and insert another. Once a rhythm is established containers are labeled very quickly. Automatic BOTTLEMATE Label Applicators can label products at speeds of up to 1200 pieces per hour!

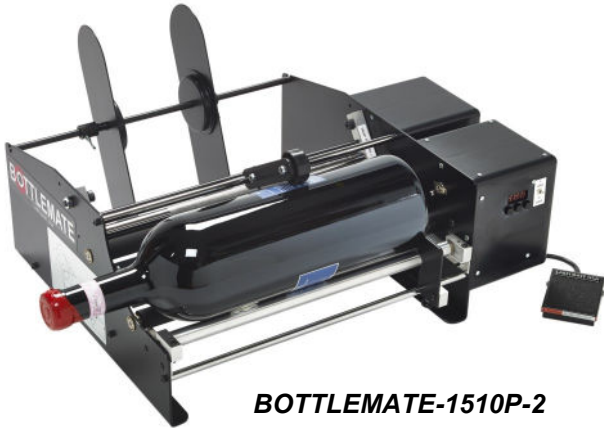


BOTTLEMATE-910P-2

900 SERIES MODELS			PRICE
BOTTLEMATE	-910P	Applies single label	\$1,600
	-910P-2	Applies two (2) labels: front and back.	\$1,995

Overall Dimensions (HWD): 8"x15.5"x17"

MAXIMUM LABEL WIDTH	MINIMUM LABEL WIDTH	MAXIMUM LABEL LENGTH	MAXIMUM ROLL DIAMETER	CORE DIAMETER	MAXIMUM BOTTLE DIAMETER	MINIMUM BOTTLE DIAMETER
9" (228-mm)	0.25" (6.35-mm)	18.5" (470-mm)	10" (254-mm)	0.5" - 6" (13-mm - 153-mm)	6" (153-mm)	0.5" (13-mm)



BOTTLEMATE-1510P-2

1500 SERIES MODELS			PRICE
BOTTLEMATE	-1510P	Applies single label	\$1,700
	-1510P-2	Applies two (2) labels: front and back.	\$2,095

Overall Dimensions (HWD): 8"x21"x17"

MAXIMUM LABEL WIDTH	MINIMUM LABEL WIDTH	MAXIMUM LABEL LENGTH	MAXIMUM ROLL DIAMETER	CORE DIAMETER	MAXIMUM BOTTLE DIAMETER	MINIMUM BOTTLE DIAMETER
15" (381-mm)	0.25" (6.35-mm)	18.5" (470-mm)	10" (254-mm)	0.5" - 6" (13-mm - 153-mm)	6" (153-mm)	0.5" (13-mm)

ADD	OPTIONS FOR AUTOMATIC BOTTLEMATE LABEL APPLICATORS	PART #	PRICE
Add desired options to your BOTTLEMATE order as line items.	Optional Rewinder for waste-liner. Factory installed on your BOTTLEMATE at the time of order.	BMR-6	\$375
	Automatic Labeling Option that allows you to simply insert your bottle to activate the labeler. Footswitch is still included, but not necessary!	AUTO-MATE	\$125

**Free consultation 1-877-833-7149
www.labelmateusa.com**



Reel-to-Reel Label Splicing Packages

Money-saving Label Splicing System with Splicing Table, Rewinder and Unwinder!

Here is a wonderful new solution for splicing label rolls. These turnkey packages allow you to splice one roll of labels onto another in order to make a larger roll from two smaller ones or to change label types during a production run.



RRS-8-12 Label Splicing System

Key Features and Benefits

- 8" wide Splicing Table accepts all label widths from 1/2" to 8".
- Pre-set 6-digit Counter stops system when desired count is reached.
- Fully Bi-Directional operation controlled from a single Control Panel.
- Dual Label Sensors for left-to-right or right-to-left Counter operation.
- Speed up to 240-ips (6096-mm) for fast label handling.
- Premium quality 3" "Quick-Chuck" Core Chucks for maximum convenience and efficiency.
- Outer Label Flanges included to guide outer edge of Label Roll. (not shown in photo).
- Convenient Splicing Tape Roll Holder right on the Splicing Table.
- Extra Roll Holder in case "Alert Labels" are used to alert users that the labels are about to change.
- Universal worldwide Power Supply is UL, CUL, & CE rated / certified for 100-240V 50-60Hz operation.
- Under and over Label Rollers with Guide Rings insure smooth label transport over the Splicing Platen.
- Stainless Steel Splicing Platen has precision Knife Grooves milled at 80° and 90° to Label Path.
- Full-width drop-down Clamping Bars hold Labels on Platen during the splicing operation.
- This product is backed by LABELMATE USA's full 3-Year Parts and Labor Limited Warranty.

MAX. ROLL DIAMETER	LABEL WIDTH	LABEL SPLICING PACKAGES Package prices include all the items listed	MODEL	PRICE
12" (304-mm)	1/2" to 8" (12.7 to 203-mm)	<ul style="list-style-type: none"> • RRS-8 Splicing Table • Two CAT-3-CHUCK Motor Drive Units, with 3" diameter, 8.6" wide "Quick-Chuck" quick-locking Core Chucks and two Label Flanges. • Convenient Control Panel controls both Drive Units' Torque and Direction for ultimate control over speed and Rewind Tension. • Pre-set 6-digit Counter (for opaque labels only) with Counter Reset Button on Panel. • Splicing Tape Roll Holder for 1" or 2" wide tape on 3" Core. • Two Adjustable Locking Bars with hardware lock the Splicing Table and the Drive Units into perfect alignment. 	RRS-8-12	\$4,595
16" (406-mm)		<ul style="list-style-type: none"> • The RRS-8-16 is identical to the RRS-8-12 except that the Unwinders/ Rewinders have a 16" Roll Diameter capacity. 	RRS-8-16	\$4,995

Free consultation 1-877-833-7149
www.labelmateusa.com

Reel-to-Reel Counters

Self-Contained Off-Line **Digital Reel-to-Reel Counters** for accurate, repeatable label counts. Universal Model makes linear measurements as well as numeric label counts on any type of label. **RRC** models are convenient, compact, all-in-one solutions for reliably counting labels.



RRC-330
Reel-to-Reel Counter with 3" Unwind and Rewind Shafts.
HWD: 14.5" x 32.5" x 13"
(368-mm x 826-mm x 330-mm)



RRC-330-AU
Ultrasonic Reel-to-Reel Counter with 3" Unwind Shaft and Adjustable 1"- 4" Rewind Shaft.
HWD: 13" x 32.5" x 13"
(330-mm x 826-mm x 330-mm)



RRC-330-U
Ultrasonic Reel-to-Reel Counter with 3" Unwind and Rewind Shafts.
HWD: 14.5" x 32.5" x 13"
(368-mm x 826-mm x 330-mm)

Key Features & Benefits

- Built-in 6-Digit Preset-Counter with Auto-Stop when Preset Count is reached or Out-of-Labels.
- Digital Controller for accurate and repeatable counts.
- Bi-Directional rewind capability.
- Durable 3" (76-mm) i.d. fin-style Unwind Core holders.
- "Wind-In" or "Wind-Out" to reverse facing of labels.
- Label width: Up to 6" (153-mm). Adjustable Label Guide helps realign uneven label rolls. 10" width available.
- Rugged Construction. Worldwide 100-240V 50-60Hz Power Supply.
- Rewind speed varies with roll diameter and weight.

REWIND CORE I.D.	UNWIND CORE	MAX ROLL DIA.	SPEED	DESCRIPTION	MODEL	PRICE
3" (76-mm)	3" (76-mm)	13" (330-mm)	Up to 114-ips (2895-mm)	Self-contained Reel-to-Reel Label Counter. For opaque labels with gaps between them.	RRC-330	\$1,995
1" - 4" adjustable	3" (76-mm)	12.5" (317-mm)	Up to 108-ips (2743-mm)	Self-contained Reel-to-Reel Label Counter with an Adjustable Rewind Core Holder . For opaque labels with gaps between them.	RRC-330-A	\$2,195
3" (76-mm)	3" (76-mm)	13" (330mm)	Up to 114-ips (2895-mm)	Ultrasonic Reel-to-Reel Label Counter for opaque and transparent labels with gaps between them.	RRC-330-U	\$3,595
1" - 4" adjustable	3" (76-mm)	12.5" (317-mm)	Up to 108-ips (2743-mm)	Ultrasonic Reel-to-Reel Label Counter with an Adjustable Rewind Core Holder . For opaque and transparent labels with gaps between them.	RRC-330-AU	\$3,895
OPTIONS FOR RRC COUNTING SYSTEMS						
ENCODER: Allows linear measurement as well as numeric label count for single and multiple-across labels. Also counts labels with no gap between them ("butt-cut" labels) whose length is known. <i>(Factory Installed option. Only available for the RRC-330 and the RRC-330-A.)</i>					RRC-ENC	\$995
Extra Unwind Shaft for 1" Cores. Change from the standard 3" Core Holder in minutes.					RR-1"U	\$125
Extra Unwind Shaft for 1.5" Cores. Change from the standard 3" Core Holder in minutes.					RR-1.5"U	\$175
Extra Unwind Shaft for 40-mm Cores. Change from the standard 3" Core Holder in minutes.					RR-40mmU	\$175

Full-Size Digital Counting Packages

Complete money saving off-line production Counter Packages with Unwinder and Rewinder.



COUNT-100-DELUXE PACKAGE



COUNT-200-DELUXE PACKAGE

COUNT-100-DELUXE						DESCRIPTION
CORE DIA.	LABEL TYPE	MAX. LABEL WIDTH	MIN. LABEL WIDTH	ROLL DIAMETER	PRICE	
3" (76-mm)	Opaque with Gaps	6" (153-mm)	0.5" (12.5-mm)	Up to 12" (305-mm)	\$2,895	Complete Bi-Directional Counting Package with: <ul style="list-style-type: none"> • Powered CAT-3 Rewinder • Powered CAT-3 Unwinder • Two C76-170 Quick-Locking Core Chucks • C-100 with Digital 6-Digit LED Counter • Inner and Outer Guide Flanges • Locking Bar • Can stop unit when preset count is reached • Count both up and down

COUNT-200-DELUXE						DESCRIPTION
CORE DIA.	LABEL TYPE	MAX. LABEL WIDTH	MIN. LABEL WIDTH	ROLL DIAMETER	PRICE	
3" (76-mm)	Opaque with Gaps	10" (254-mm)	0.5" (12.5-mm)	Up to 12" (305-mm)	\$3,195	Complete Bi-Directional Counting Package with: <ul style="list-style-type: none"> • Powered CAT-3 Rewinder • Powered CAT-3 Unwinder • Two C76-270 Quick-Locking Core Chucks • C-200 with Digital 6-Digit LED Counter • Inner and Outer Guide Flanges • Locking Bar • Can stop unit when preset count is reached • Count both up and down



COUNT-100-DELUXE-U PACKAGE

COUNT-100-DELUXE-U						DESCRIPTION
CORE DIA.	LABEL TYPE	MAX. LABEL WIDTH	MIN. LABEL WIDTH	ROLL DIAMETER	PRICE	
3" (76-mm)	<ul style="list-style-type: none"> • Opaque • Transparent • Gapped • No Gap 	6" (153-mm)	0.5" (12.5-mm)	Up to 12" (305-mm)	\$3,895	Complete Bi-Directional Counting Package with: <ul style="list-style-type: none"> • Powered CAT-3 Rewinder • Powered CAT-3 Unwinder • Two C76-170 Quick-Locking Core Chucks • C-100-U with Digital 6-Digit LED Counter • Inner and Outer Guide Flanges • Locking Bar • Can stop unit when preset count is reached • Count both up and down Bonus Feature: Ability to measure linear lengths and "butt-cut" labels.

Free consultation 1-877-833-7149
www.labelmateusa.com

Full-Size Digital Label Counters

Count your labels in-line as you rewind them from your printer, or
count them off-line using an Unwinder and a Rewinder!

See the previous page for complete money saving off-line production
Counter Packages with Unwinder and Rewinder.



C-100-U UNIVERSAL COUNTER



C-100 COUNTER



C-200 COUNTER

COUNTER UNITS REQUIRE A REWINDER & PRINTER OR REWINDER & UNWINDER			
COUNTER MODEL	C-100-U	C-100	C-200
PRICE	\$1,795	\$695	\$795
MAXIMUM LABEL WIDTH	6" (152-mm)	6" (152-mm)	10" (254-mm)
MINIMUM LABEL WIDTH	NONE	1/2" (12.7-mm)	1/2" (12.7-mm)
COUNTS TRANSPARENT LABELS	YES	NO	NO
COUNTS BUTT-CUT LABELS (NO GAP)	YES	NO	NO
PROGRAMMABLE SCALING COUNTER	YES	NO	NO
COUNTS RFID TAGS	YES	OPAQUE W/GAP	OPAQUE W/GAP
MEASURES LINEAR LENGTHS	YES	NO	NO
ALL DIGITAL 6-DIGIT LED COUNTER	YES	YES	YES
COUNTS UP OR DOWN	YES	YES	YES
STOPS REWINDER ON PRE-SET COUNT	YES	YES	YES
ADJUSTABLE LABEL GUIDE RINGS	YES	YES	YES

Free consultation 1-877-833-7149
www.labelmateusa.com

About Label Rewinders

- ◆ Label Rewinders wind up labels into a roll as they come out of a printer.
- ◆ If you don't use a Rewinder, you have to gather up the labels by hand once the printing job is finished. A Rewinder is much more convenient and saves you time and effort.
- ◆ LABELMATE USA Rewinders are silent in operation and use our proprietary "Constant Adjustable Torque™" ("CAT") technology to achieve reliable performance at excellent prices.

To select a Rewinder you need to answer three questions:

1. How wide are your labels?
2. What Label Core Diameter(s) do you want to use to wind up your labels?
3. How large a Roll Diameter do you want to be able to wind up?

LABEL WIDTH	CORE HOLDER DIAMETER & TYPE	ROLL DIA.	CHOOSE MODEL:	NOTES
Up to 4.5" (114-mm)	1" to 4" Cores or "coreless" (No Core at all)	Up to 8.6" (220-mm)	MC-11	See page 12
	3" Fin-Style or coreless		MC-10A	
Up to 6" (153-mm)	1" to 4" Cores or "coreless"	Up to 11" (280-mm)	CAT-3-ACH	See pages 13-19
	3" Fin-Style Shaft	Up to 12" (305-mm)	CAT-3	
	"Quick Chuck" quick-locking Core Chuck		CAT-3-CHUCK	
		Up to 16" (406-mm)	CAT-3-R16-CHUCK or CAT-40G	
		Up to 18" (457-mm)	CAT-3-R18-CHUCK	
Up to 8.6" (220-mm)	"Quick Chuck" quick-locking Core Chuck	Up to 12" (305-mm)	CAT-3-CHUCK-220	
		Up to 16" (406-mm)	CAT-3-R16-CHUCK-220	
		Up to 18" (457-mm)	CAT-3-R18-CHUCK	
Up to 10.6" (270-mm)	3" Fin-Style Shaft	Up to 12" (305-mm)	CAT-3-W10	
	"Quick Chuck" quick-locking Core Chuck		CAT-3-CHUCK-10	
		Up to 16" (406-mm)	CAT-3-R16-CHUCK-10	
		Up to 18" (457-mm)	CAT-3-R18-CHUCK-10	

LABELMATE USA has also developed Rewinders exclusively for sensitive inkjet printers and new Loop Rewinders that reduce the paper resistance to your printer to zero. (see page 17). Please call us toll free at 877-833-7149 with any questions. We will be happy to help you find the best rewinding solution for your particular application.

Reel-to-Reel Rewinders

The new off-line **RRR-330** and **RRR-330-A Reel-to-Reel Unwinders / Rewinders** provide a convenient way to reverse the wind direction of your label roll (Wind-In / Wind-Out) in a self-contained table-top package.

Designed for all-day, every-day use, these **Reel-to-Reel Unwinders / Rewinders** are backed by a 3-Year Parts and Labor Limited Warranty, assuring you reliable performance.



RRR-330
HWD: 13" x 32.5" x 13"
(330-mm x 826-mm x 330-mm)

CONTROLS

- Power On-Off
- Stop / Run
- Speed Adjust
- Speed Variable/Maximum
- Photocell Sensitivity Adjust
- New Bi-Directional rewind capability!



RRR-330-A
HWD: 13" x 32.5" x 13"
(330-mm x 826-mm x 330-mm)

KEY FEATURES & BENEFITS

- "Wind-In" or "Wind-Out" to reverse the facing direction of labels.
- Uni-Directional Rewind to the right-hand Spindle. The left-hand Spindle is the Unwind (supply) Spindle.
- Auto-Stop at end of roll.
- Label width: Up to 6" (153-mm). Adjustable Label Guide helps realign uneven label rolls.
- Rugged Construction. Universal 100-240V 50-60Hz Power Supply.
- Rewind speed varies with roll diameter.
- Standard 3" (76-mm) Fin-style Unwind Core Holder.

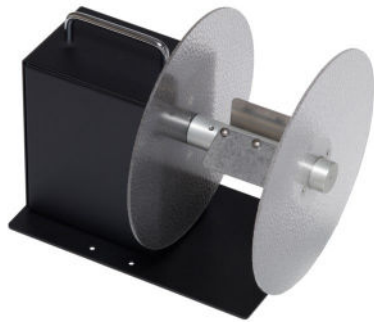
REWIND CORE	UNWIND CORE	ROLL DIA.	SPEED	REEL-to-REEL UNWIND / REWIND SYSTEMS	MODEL	PRICE
3" (76-mm)	3" (76-mm)	13" (330-mm)	Up to 114-ips (2895-mm)	As above with 13" (330-mm) Roll Diameter capacity.	RRR-330	\$1,495
1" - 4" adjustable	3" (76-mm)	12.5" (317-mm)	Up to 108-ips (2743-mm)	As above with 12.5" (317-mm) Roll Diameter capacity and a 1" to 4" Adjustable Rewind Core Holder .	RRR-330-A	\$1,795
OPTIONS FOR RRR UNWIND/REWIND SYSTEMS						
Extra Unwind Shaft for 1" Cores. Change from the standard 3" Core Holder in minutes.					RR-1"U	\$125
Extra Unwind Shaft for 1.5" Cores. Change from the standard 3" Core Holder in minutes.					RR-1.5"U	\$175
Extra Unwind Shaft for 40-mm Cores. Change from the standard 3" Core Holder in minutes.					RR-40mmU	\$175

Free consultation 1-877-833-7149
www.labelmateusa.com

Compact Low-Cost “Mini-CAT” Label Rewinders

The world’s most popular and reliable Rewinders at incredible prices!

- Save time and money with a Mini-CAT Rewinder.
- Seven speeds forward and reverse for perfect rewind torque control.
- Textured Lexan Flange(s) (on the MC-10A) for style and durability.
- Both models can also rewind coreless, without any Core at all.
- Use two MINI-CATs to *wind-in*, *wind-out* to reverse the facing of labels.
- Durable and reliable, designed for continuous 24/7 service.
- Backed by our unmatched **5-Year Parts and Labor Limited Warranty!**



*The **MC-10A** Rewinder. Shown with the Optional **Outer Flange***



*Upgrade to the **MC-11** Rewinder with an Adjustable Core Holder for 1” to 4” dia. Cores. Shown with the optional **Adjustable Paper Guide***

CORE DIA.	LABEL WIDTH	ROLL DIA.	SPEED	DESCRIPTION	MODEL	PRICE
3” (76-mm)	Up to 4.5” (114-mm)	Up to 8.6” (220-mm)	Up to 102-ips (2590-mm)	Fixed 3” dia. Fin-Style Core Holder . Switch selectable direction and speed. Adjustable torque setting. Also does coreless rewinding.	MC-10A	\$425
1” to 4” Adjustable				With Adjustable Core Holder that accepts any Core Diameter from 1” to 4”. Switch selectable direction and speed. Adjustable torque setting. Also does coreless rewinding.	MC-11	\$525
OPTIONS FOR MINI-CAT REWINDERS					PART #	PRICE
Add desired option to your MINI-CAT order.	Adjustable Paper Guide for the MC-11 or MC-10A Rewinder. Guides the outer edge of the label web to ensure an even roll edge, or for labels less than 2-1/2” wide.				APG-MC	\$50
	Outer Label Flange for MC-10A only. Can also be field installed on MC-10A Units with Serial Numbers MC10A0042001 and up only.				FLANGE, 8	\$45

*MINI-CAT Rewinders are not suitable for label slitting applications.

Free consultation 1-877-833-7149
www.labelmateusa.com

Full Size, Heavy-Duty Label Rewinders CAT-3 12" Roll Capacity



CAT-3-STANDARD



CAT-3-ACH w/APG-CAT



CAT-3-CHUCK

CORE DIA.	LABEL WIDTH	ROLL DIA.	DESCRIPTION	MODEL	ADD SUFFIX	PRICE
None		Up to 12" (305-mm)	Coreless Rewind Shaft with two label Flanges and rewind Bail.	CAT-3	-CORELESS	\$825
1" (26-mm)			1" Diameter Fin-Style Rewind Shaft with two label Flanges.		-1-INCH	\$825
1" to 4"	Up to 6" (152-mm)	Up to 11" (280-mm)	1" to 4" Adjustable Core Holder.		-ACH	\$1,125
			6" wide Fin-Style Core Holder with two label Flanges.		-STANDARD	\$825
3" (76-mm)	Up to 12" (305-mm)	Up to 12" (305-mm)	6" wide "Quick-Chuck" with two label Flanges.		-CHUCK	\$1,075
			8.6" wide "Quick-Chuck" with two label Flanges.		-CHUCK-220	\$1,135
	Up to 10" (254-mm)	Up to 12" (305-mm)	10" wide Fin-Style Core Holder with two label Flanges.		-W10	\$925
			10" wide "Quick-Chuck" with two label Flanges.		-CHUCK-10	\$1,195

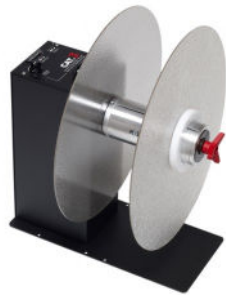
Base footprint: 7" x 15". Size overall HWD: 14"x12"x17" (356x303x432-mm). Maximum roll weight 20 lbs. (9.1-Kg).

	OPTIONS FOR CAT-3 REWINDERS	PART #	PRICE
Add desired options to your CAT-3 order as line items.	High-Torque Option with a worldwide 100-240V 50-60Hz Regulated Power Supply. Maximizes CAT-3 torque. Factory-installed only.	HTO-CAT	\$150
	Low-Torque Option for use with inkjet printers or delicate labels. Torque is user-adjustable from very low to normal. Factory-installed only.	LTO-CAT	\$150
	Adjustable Paper Guide - Use with the CAT-3-ACH Rewinder. Guides the outer edge of the label web to ensure an even roll edge.	APG-CAT	\$55
	The Burster Bar attaches to your CAT-3-CHUCK Rewinder or UCAT-3-CHUCK Unwinder to conveniently burst perforated tags or labels. Use "in-line" with your printer or "off-line" with your Unwinder and Rewinder. For 12" capacity or less CAT-3 Rewinders only.	BURST-180-DELUXE	\$375
	Two Adapters that allow use of a 6" inside-diameter Core on a 3" diameter CAT-3-CHUCK Rewinder.	ADAPT-326	\$30
	Optional 6" wide Adjustable Core Holder for 1" - 4" cores.	ACH-CAT	\$300

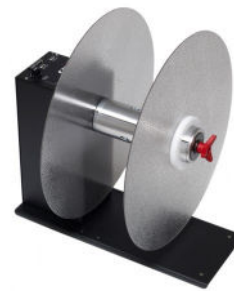
*Maximum Speed of CAT-3 Rewinders on this page is 240-ips (6096-mm)

Free consultation 1-877-833-7149
www.labelmateusa.com

Full Size, Heavy-Duty Label Rewinders CAT-3 16" & 18" Roll Capacity



CAT-3-R16-CHUCK



CAT-3-R18-CHUCK-220

Here are two large roll diameter Label Rewinders for those big jobs. Both the R16 Rewinder and the new R18 Rewinder are equipped with the High Torque Option and a worldwide 100-240V 50-60Hz Power Supply.

Also available is a 16" Roll Diameter Gear Driven Rewinder for slitting or other applications that require extra high torque up to nine times that of the standard CAT-3-Rewinders. See next page for details.

MODEL	ROLL DIAMETER	MAXIMUM ROLL WEIGHT	SIZE OVERALL (HxWxD) (SINGLE UNIT)	SIZE OVERALL (HxWxD) (2 UNITS CONNECTED AS UNWINDER REWINDER)
R16	Up to 16" (400-mm)	32-lbs. (14.5 Kg)	19.25" x 16" x 17" (489 x 406 x 432-mm)	19.25" x 39" x 17" (489 x 991 x 432-mm)
R18	Up to 18" (457-mm)	50-lbs. (22.7 Kg)	20.25" x 18" x 19.25" (514 x 457 x 489-mm)	20.25" x 54" x 19.25" (514 x 1372 x 489-mm)

CORE DIA. I.D.	LABEL WIDTH	ROLL DIA.	DESCRIPTION	MODEL	ADD SUFFIX	PRICE
3" (76-mm)	Up to 6" (152-mm)	Up to 16" (400-mm)	6" wide "Quick-Chuck" with two label Flanges. Includes the High-Torque Option .	CAT-3	-R16-CHUCK	\$1,275
	Up to 8.6" (220-mm)		8.6" wide "Quick-Chuck" with two label Flanges. Includes the High-Torque Option .		-R16-CHUCK-220	\$1,335
	Up to 10" (254-mm)		10" wide "Quick-Chuck" with two label Flanges. Includes the High-Torque Option .		-R16-CHUCK-10	\$1,395
	Up to 6" (152-mm)	Up to 18" (457-mm)	6" wide "Quick-Chuck" with two label Flanges. Includes the High-Torque Option .		-R18-CHUCK	\$1,550
	Up to 8.6" (220-mm)		8.6" wide "Quick-Chuck" with two label Flanges. Includes the High-Torque Option .		-R18-CHUCK-220	\$1,605
	Up to 10" (254-mm)		10" wide "Quick-Chuck" with two label Flanges. Includes the High-Torque Option .		-R18-CHUCK-10	\$1,695

	OPTIONS FOR CAT-3-R16 AND R18 REWINDERS	PART #	PRICE
Add to your CAT-3 order.	Adjustable Locking Bar allows two CAT-3 Units to be locked together in position to create a Bi-Directional Unwind / Rewind System.	LOCKING BAR	\$50
	Two Adapters that allow use of a 6" inside-diameter Core on a 3" diameter CAT-3-CHUCK Rewinder.	ADAPT-326	\$30

Free consultation 1-877-833-7149
www.labelmateusa.com

*Maximum Speed of CAT-3-R16 Rewinders is 320-ips (8128-mm)
*Maximum Speed of CAT-3-R18 Rewinders is 360-ips (9144-mm)

Gear-Driven Heavy-Duty Label Rewinder CAT-40G

High-power for slitting and large 16” roll rewinding!

Rugged powerhouse!

Here’s the solution for tight rewind of large rolls and for slitting large rolls up to 16” (406-mm) in diameter.

A newly developed Gear-Driven, Amplified-Torque Motor brings impressive power to your project.

Equipped with a “Quick-Chuck” quick-locking Core Chuck, the **CAT-40G** is ready for your toughest assignments.

Supplied with a Universal Worldwide 100-240V 50-60Hz Regulated Power Supply.

The **CAT-40G** is available in two versions. For label rewinding, the **CAT-40G-SA** manages the rewind process with a Sensor Arm that turns off rewinding when your printer stops.

For slitting applications, you’ll want torque available full-time so you do not need the Sensor Arm. In that case, order the standard **CAT-40G** that has no Sensor Arm.

This durable Rewinder is designed for continuous 24/7 operation and has an outstanding **5-Year Parts and Labor Limited Warranty**, the best in the industry!

*The **CAT-40G-SA-220** shown with the Outer Label Flange in place*



The Sensor Arm controls the rewinding of this high-torque unit

CORE DIA.	LABEL WIDTH	ROLL DIA.	DESCRIPTION	MODEL	ADD SUFFIX	PRICE
3” (76-mm)	Up to 6” (152-mm)	Up to 16” (400-mm)	Heavy-duty Gear Driven Label Rewinder with a 6” wide “Quick-Chuck” , Sensor Arm and Inner and Outer Label Flanges.	CAT-40G-SA	-	\$1,675
	Up to 8.6” (220-mm)		With an 8.6” wide “Quick-Chuck” .		-220	\$1,735
	Up to 10” (254-mm)		With a 10” wide “Quick-Chuck” .		-10	\$1,795
3” (76-mm)	Up to 6” (152-mm)	Up to 16” (400-mm)	CAT-40G with No Sensor Arm for off-line slitting applications only. Includes Inner and Outer label Flanges. Do not order the CAT-40G for rewinding applications as the high torque could pull your printer out of registration.	CAT-40G	-	\$1,545
	Up to 8.6” (220-mm)		With an 8.6” wide “Quick-Chuck” .		-220	\$1,605
	Up to 10” (254-mm)		With a 10” wide “Quick-Chuck” .		-10	\$1,665

***Maximum Speed of CAT-40G Rewinders is 320-ips (8128-mm)**

Free consultation 1-877-833-7149
www.labelmateusa.com

Heavy-Duty Label Rewinders with Sensor Arm CAT-3SA

Most inkjet printers are susceptible to banding or registration problems if the web is pulled too hard during printing. The **CAT-3SA Rewinder** features a special Sensor Arm (also called a Dancer Arm) that tracks the labels coming from the printer and prevents excessive tension on the label web.

These Rewinders are backed by LABELMATE USA's industry-best 5-Year Parts and Labor Limited Warranty, assuring you reliable performance.



CAT-3SA-CHUCK-220

CORE DIA.	LABEL WIDTH	ROLL DIA.	DESCRIPTION	MODEL	ADD SUFFIX	PRICE
None	Up to 6" (152-mm)	Up to 12" (305-mm)	Coreless Rewind Shaft with two label Flanges and rewind Bail.	CAT-3SA	-CORELESS	\$950
1" (26-mm)			1" Diameter Fin-Style Rewind Shaft with two label Flanges.		-1-INCH	\$950
1" to 4"		Up to 11" (280-mm)	1" to 4" Adjustable Core Holder.		-ACH	\$1,250
3" (76-mm)	Up to 12" (305-mm)	6" wide Fin-Style Core Holder with two label Flanges.	-STANDARD		\$950	
		6" wide "Quick-Chuck" with two label Flanges.	-CHUCK		\$1,200	
		8.6" wide "Quick-Chuck" with two label Flanges.	-CHUCK-220		\$1,260	
	Up to 8.6" (220-mm)	10" wide Fin-Style Core Holder with two label Flanges.	-W10		\$1,050	
	Up to 10" (254-mm)	10" wide "Quick-Chuck" with two label Flanges.	-CHUCK-10		\$1,320	
Up to 6" (152-mm)	Up to 16" (400-mm)	6" wide "Quick-Chuck" with two label Flanges. Includes the High-Torque Option.	-R16-CHUCK		\$1,400	

Base footprint: 7" x 15". Size overall HWD: 14"x12"x17" (356x303x432-mm). Maximum roll weight 20 lbs. (9.1-Kg).

	OPTIONS FOR CAT-3SA REWINDERS	PART #	PRICE
Add as a line item on your CAT-3SA order.	Adjustable Paper Guide - Use with the CAT-3SA-ACH Rewinder. Guides the outer edge of the label web to ensure an even roll edge.	APG-CAT	\$55
	Counterbalanced Sensor Arm - For very sensitive Printers that require almost no force be exerted on them. User-supplied weight(s) can be added to the Sensor Arm to increase or decrease the tension on the label web.	SA-CSA	\$25

*Maximum Speed of CAT-3SA Rewinders is approximately 120-ips (3048-mm)

Free consultation 1-877-833-7149
www.labelmateusa.com

Loop Label Rewinder / Unwinder CAT-3L

The new **CAT-3L** Loop Rewinder / Unwinder uses a special chassis-mounted photo-detector to start and stop the rewinding action. A “loop” of label stock is created between the two horizontal loop support rods. A photo-detector observes when the loop is no longer at optimum length and turns on or off the rewinding action. The loop length is easily adjustable by the position of the photo-detector beam.

The **CAT-3L** is ideal for applications with printers that back feed as well as for very sensitive ink-jet printers that cannot tolerate much rewind force without causing undesirable registration or artifact problems. Since the only tension on the label web is the weight of the loop, the rewound roll will be very loose, but the printer will print perfectly. The tension of the loop may be increased with the optional weighted roller.

A CAT-3L Loop Rewinder can also be used as an *Unwinder* for printers that back feed and require little or no resistance from the unwind roll. The CAT-3L Rewinder /Unwinder is also available in custom OEM configurations with multiple position sensors. Call us toll-free to discuss your application with one of our product experts.



CAT-3L-CHUCK-220

NOTE: When ordering an *Unwinder*, you must add a “U” after the “L” in the model number. EX.: CAT-3LU-XXXXXX.

CORE DIA.	WIDTH	ROLL DIA.	LOOP UNWINDER / REWINDER	MODEL	ADD SUFFIX	PRICE
1" (26-mm)	Up to 6" (152-mm)	Up to 12" (305-mm)	1" diameter Fin-Style Rewind Shaft and two label Flanges.	CAT-3L	-1-INCH	\$1,225
1" to 4"			1" to 4" Adjustable Core Holder.		-ACH	\$1,525
3" (76-mm)	Up to 8.6" (220-mm)	Up to 12" (305-mm)	6" wide Fin-Style Core Holder and two label Flanges.		-STANDARD	\$1,225
			6" wide "Quick-Chuck" and two label Flanges.		-CHUCK	\$1,475
	Up to 10" (254-mm)	Up to 12" (305-mm)	8.6" wide "Quick-Chuck" and two label Flanges.		-CHUCK-220	\$1,535
			10" wide Fin-Style Core Holder and two label Flanges.		-W10	\$1,325
			10" wide "Quick-Chuck" and two label Flanges.		-CHUCK-10	\$1,595
OPTIONAL WEIGHTED ROLLERS						
Any	6"	Any	Weighted Roller with adjustable weight and Guide Rings.	N/A	WR-170	\$60
	8"				WR-220	\$75
	10"				WR-270	\$90

*Maximum Speed of CAT-3L Rewinders is 240-ips (6096-mm)

Free consultation 1-877-833-7149
www.labelmateusa.com

Label Rewind / Unwind Station TWIN-CAT-3

The world's easiest solution for wind-in / wind-out, label reversing & inspection applications.



TWIN-CAT-3 shown with optional Inspection Fixture and Counter

- Unwind and Rewind labels on one machine.
- Ideal for “wind-in / wind-out” operations.
- Each spindle can rewind or unwind. You control the direction and torque on each spindle independently.
- Reverse the order of serialized labels.
- Conveniently rewind labels onto a different core size.
- Wind small rolls of labels from larger ones.
- Strip unwanted matrix from die-cut labels for easy disposal as you rewind them.
- Your choice of Core Holders gives you maximum versatility.
- Each Spindle allows roll diameters up to 8.6” (220-mm).
- Add the Label Inspection option to create a stand-alone Inspection Station.
- Then, add a Label Counter to create an all-in-one Inspection and Counting Station.
- Set up an in-line slitting operation with a LABELMATE Slitter at your printer output.
- An External Halt Jack allows you to STOP and START with the optional Foot Switch, optional Preset Label Counter or other external switch / device.
- Maximum Speed: up to 175-inches per second (4445-mm).
- Worldwide, heavy-duty universal Power Supply included.

Dual Spindle Rewinder / Unwinder Drive Unit only				TWIN-CAT-3	\$995		
Select your two Core Holders from the list below.– Mix or Match (except ACH-TC3).							
CORE HOLDER TYPE	CORE DIAMETER	MAXIMUM WIDTH	# OF FLANGES	ORDER NUMBER	PRICE EACH		
Coreless	NA	6” (152-mm) 10” (254-mm)	2	SHAFT, TC-CL	\$150		
Fin-Style	1” (25.4-mm)			SHAFT, TC-1”	\$125		
	3” (76-mm)			SHAFT, TC-W6	\$150		
				SHAFT, TC-W10	\$200		
Continuously Adjustable	1” to 4” (25- to 101-mm)	6” (152-mm)	1	ACH-TC3 Cannot mix.*	\$300		
“Quick-Chuck” Quick-locking Core Chuck	1.5-inch (38.1-mm)	6.7” (170-mm)		TC-C1.5-170	\$295		
		10.6” (270-mm)		TC-C1.5-270	\$395		
		40-mm (1.57”)		TC-C40-170	\$295		
	3” (76-mm)	6.7” (170-mm)		TC-C76-170	\$295		
		8.6” (220-mm)		TC-C76-220	\$395		
				10.6” (270-mm)	TC-C76-270	\$455	
	4” (102-mm)	6.7” (170-mm)		1	TC-C100-170	\$345	
	OPTIONAL: Dual Control Low-Torque Option for delicate label webs.				LTO-TC3	\$225	

Base footprint: 7” x 15”.

*The **ACH-TC3** cannot be mixed with any other type of Core Holder. The **ACH-TC3** is not suitable for slitting

Free consultation 1-877-833-7149
www.labelmateusa.com

Label Rewind / Unwind Station TWIN-CAT-3



Add a Label Inspection Fixture.

You can wind-in or wind-out at the same time as you perform the inspection operation.

When inspection is complete, you can rewind the labels back onto their original Core by reversing the direction of the Rewind Spindles.

Add a Label Counter to create an all-in-one Inspection and Counting Station.



The **PC-1** can count up or count down.
The **PC-2** adds an additional programmable scaling feature.

You have the option to preset a batch size to stop the **TWIN-CAT-3** automatically when your Preset Count is reached.

Fully Digital Counters! No adjustments required! For opaque labels only.

WIDTH (MAX.)	OPTIONS FOR TWIN-CAT-3 REWIND/UNWIND STATION	MODEL	PRICE
6" (152-mm)	Inspection Fixture has two smooth rollers that your labels glide over as they are presented for inspection. Bi-Directional, variable speed operation of the TWIN-CAT-3 allows control over winding tightness as well. Can be started or stopped with the optional Foot Switch listed below. Installs in minutes.	INSP-6	\$195
8" (203-mm)		INSP-8	\$225
10" (254-mm)		INSP-10	\$255
NOTE: An INSP Option is required for the Counter.	Digital Preset Counter for opaque labels pre-mounted on the INSP Inspection Station. Includes an External Halt Cable to stop the TWIN-CAT-3 when the desired count is reached.	PC-1	\$395
NOTE: An INSP Option is required for the Counter.	Digital Preset Counter . Same as above but with additional programmable scaling feature.	PC-2	\$495
Optional Foot Switch operates the External Halt Control on the TWIN-CAT-3 . To use the Foot Switch at the same time as the Automatic Stop feature of the PC-1 Preset Counter you must also order the FSPC-TC3 Option immediately below.		FOOTSWITCH	\$75
This option permits simultaneous use of the Foot Switch and the Automatic Stop Feature of the Preset Counter . Factory installed only.		FSPC-TC3	\$175



TWIN-CAT-3 with two
Universal **ACH-TC3**
Core Holders



The optional
FOOTSWITCH can be
used to start or stop the
TWIN-CAT-3



TWIN-CAT-3 with two
TC-W6, 6" wide
Fin-Style Shafts

Free consultation 1-877-833-7149
www.labelmateusa.com

Label Dispensers LD-RS / LD-S



LD-100-RS-SS
(Stainless Steel)

Model-”RS”

One look at these Label Dispensers compared to any others on the market will show you these are the highest-quality, easiest to use Label Dispenser products available. Labelmate USA Dispensers are simple, reliable and convenient. LABELMATE USA Dispensers use the latest Reflective Sensor technology to give you one simple adjustment for label length.

As you pick up a label the next one is immediately advanced. The label is presented right at the front of the machine, convenient for both left-handed and right-handed operators. Fast label loading.

A “HIGH-LOW” Speed Switch allows adjustment for operator preference. There are no troublesome mechanical position switches to cause adjustment or operational problems.

Full 3-Year Parts and Labor Limited Warranty included.

Stainless Steel Models are ideal for food packaging, pharmaceutical, and cosmetic industry applications.



LD-100-RS

LABEL LENGTH	CORE DIA.	ROLL DIA.	LABEL WIDTH	DESCRIPTION	MODEL	PRICE
1/4” (6-mm) or more	1.5” or larger	8.6” max. (220-mm) (Up to 12”, 305-mm, with the LRB-12 option.)	1/2” to 4-1/2” (12- to 114-mm)	Durable powder-coated chassis and cover. Not for transparent labels.	LD-100-RS	\$575
				Easy-to-clean Stainless-Steel chassis and sealed Stainless-Steel cover. Not for transparent labels.	LD-100-RS-SS	\$825
			1/2” to 6-1/2” (12- to 165-mm)	Durable powder-coated chassis and cover. Not for transparent labels.	LD-200-RS	\$675
				Easy-to-clean Stainless-Steel chassis and sealed Stainless-Steel cover. Not for transparent labels.	LD-200-RS-SS	\$925



Model – “S” For very small or unusual shape labels.

The unique **LD-100-S** strips the label from the label web and then gently sets it back down on the web ready for the operator to pick at the front of the machine.

The **LD-100-S** will continuously advance labels at the rate you choose or will advance labels only when the included Foot Switch is pressed.

LABEL LENGTH	CORE DIA.	ROLL DIA.	LABEL WIDTH	DESCRIPTION	MODEL	PRICE
1/4” (6-mm) minimum, no maximum	1.5” or larger	8.6” max (220-mm) (Up to 12” , 305-mm, with the LRB-12 option.)	1/4” to 4-1/2” (6- to 114-mm)	Label Dispenser with continuously variable Speed Control and Foot Switch. Ideal for production lines and very small or transparent labels.	LD-100-S	\$649

Please see available options on the next page.

Free consultation 1-877-833-7149
www.labelmateusa.com

Universal Label Dispensers LD-U

Universal Model “U” for Transparent, Semi-Transparent, *and* Opaque Labels!

- Dispense all label types with this, our newest and best Label Dispenser!
- A new patented-technology Visible-Light LED Label Sensor makes adjustment easy with any type of label.
- The Dispenser peels your label from its backing and presents it ready to pick-up.
- As you pick-up a label from the Dispenser, the next label is immediately and automatically advanced.
- A “HIGH-LOW” Speed Switch and an adjustable Ruggedized Sensor are standard features.
- Stainless Steel Models are ideal for food processing, pharmaceutical, and cosmetic industry applications.



LD-100-U
for all types of labels

LABEL LENGTH	CORE DIA.	ROLL DIA.	LABEL WIDTH	DESCRIPTION	MODEL	PRICE
1/4" (6-mm) or more	1.5" or Larger (38-mm)	8.6" max. (220-mm)	1/2" to 4-1/2" (12- to 114-mm)	Durable powder-coated chassis and cover. For transparent or opaque labels.	LD-100-U	\$795
				Easy-to-clean Stainless-Steel chassis and sealed Stainless-Steel cover.	LD-100-U-SS	\$1,045
			1/2" to 6-1/2" (12- to 165-mm)	Durable powder-coated chassis and cover.	LD-200-U	\$895
				Easy-to-clean Stainless-Steel chassis and sealed Stainless-Steel cover.	LD-200-U-SS	\$1,145

New & Hot!



BP-LD
Battery Pack



FLANGES-LD
Guide Flanges



LDC-1
Label Counter



LRB-12
Extension Bracket

ROLL DIA.	OPTIONS FOR LABEL DISPENSERS	PART #	PRICE
-	Battery Pack & Charger. Makes your Label Dispenser mobile by allowing it to operate without plugging-in to a wall outlet. Battery life of 10 - 12 hours constant use! Fully charges in 8 - 10 hours.	BP-LD	\$360
-	Label Dispenser Counter (Factory-installed). Counts labels as they are dispensed. Not available for Stainless Steel (-SS) or (-S) models.	LDC-1	\$150
-	External Start feature. (Factory installed.) Allows an outside command signal to be sent to the Label Dispenser to tell it when to dispense the next label. When external device is not in use Label Dispenser functions like normal.	LD-ES	\$150
Up to 8.6" (220-mm)	Aluminum Flange Plates suggested for use with narrow labels that may have a tendency to telescope or fall off the Core. Set of 2 Flanges. See photo above.	FLANGES-LD	\$50
Up to 12" (305-mm)	Label Roll Bracket Extension. Powder-coated extension for LD-100 Models (not for LD-200) allows the use of label supply rolls up to 12" in diameter. Includes mounting hardware. See photo above.	LRB-12	\$50

Free consultation 1-877-833-7149
www.labelmateusa.com

About Label Unwinders

- ◆ Label Unwinders provide a convenient way to manage your supply roll of labels as it feeds into your printer.
- ◆ You can use larger rolls of labels to minimize your unit label cost. The supply roll of labels does not have to be refreshed as often, saving time and adding convenience.
- ◆ External label rolls on an Unwinder are always visible, making it easy to monitor the status of your label supply.

Powered Unwinders

A Powered Unwinder provides motorized assistance to feed labels into the printer and is always preferred over an Non-powered Unwinder.

How a LABELMATE USA Powered Unwinder works:

- ◆ When the printer takes in blank label stock, it lifts a Sensor Arm, signaling the printer's demand for more labels.
- ◆ Then the Unwinder advances the label web until there is sufficient slack that the Sensor Arm relaxes and stops the assisted unwinding.
- ◆ The Unwinder then waits until the printer once again signals its demand for more labels by lifting the Sensor Arm.
- ◆ The amount and speed of power assist can be conveniently adjusted.

A LABELMATE USA Powered Unwinder can also be used as a Label Rewinder by temporarily blocking the Sensor Arm in the "ON" position.

Non-Powered Unwinders

A Non-powered Unwinder is a passive unit that provides a small amount of back tension but no unwind assistance.

- ◆ With a non-powered Unwinder, the printer physically pulls the label stock off the roll and into the printer. Many printers are not strong enough to do this.
- ◆ Even if the printer is able to pull the labels into the printer, doing so may put significant stress on the printer, particularly with heavy label rolls.
- ◆ This may cause registration problems or lead to early failure of the printer's label advance mechanism.

For the fastest, most convenient mounting and removal of label rolls and cores possible, choose an Unwinder model with a "Quick-Chuck" Core Holder.

LABELMATE USA Unwinders provide the most advanced unwinding solutions available. See our full line of Label Unwinders starting on the next page.



UCAT-40
The "Ultimate Unwinder"

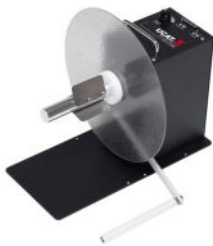
Powered Label Unwinders UCAT-40 / UCAT-3

Eliminate stress on your printer by feeding labels with a Powered Unwinder and use larger supply rolls for greater economy.

Powered Unwinders operate at speeds up to 120 ips (3048-mm).
(Powered Unwinders can also rewind.)

An Inner Flange is included with all Unwinders. Outer Flanges are optional. (See page 24.)

CORE DIA.	LABEL WIDTH	ROLL DIA.	THE "ULTIMATE UNWINDER"	MODEL	ADD SUFFIX	PRICE
3" (76-mm)	Up to 6" (152-mm)	Up to 16" (400-mm)	With a 6" wide (152-mm) "Quick-Chuck" Core Holder. Continuously adjustable feed rate. A Sensor Arm starts & stops the unwinding automatically.	UCAT-40	-	\$1,345
	Up to 8.6" (220-mm)		With an 8.6" wide (220-mm) "Quick-Chuck" .		-220	\$1,405
	Up to 10" (254-mm)		With a 10" wide (254-mm) "Quick-Chuck" .		-10	\$1,465



UCAT-3-STANDARD



UCAT-3-ACH



UCAT-3-CHUCK

CORE DIA.	LABEL WIDTH	ROLL DIA.	POWERED HEAVY-DUTY UNWINDERS	MODEL	ADD SUFFIX	PRICE
1" to 4"	Up to 6" (152-mm)	Up to 11" (280-mm)	With a 1" to 4" Adjustable Core Holder . (If Outer Flange is desired, use APG-CAT)	UCAT-3	-ACH	\$1,245
3" (76-mm)		Up to 12" (305-mm)	With a 6" wide Fin-Style Core Holder . Continuously adjustable feed rate. Sensor Arm starts & stops unwinding automatically.		-STANDARD	\$945
			With a 6" wide "Quick-Chuck" .		-CHUCK	\$1,195
			With an 8.6" wide "Quick-Chuck" .		-CHUCK-220	\$1,255
		Up to 10" (254-mm)	With a 10" wide Fin-Style Core Holder .		-W10	\$1,045
			With a 10" wide "Quick-Chuck" .		-CHUCK-10	\$1,315

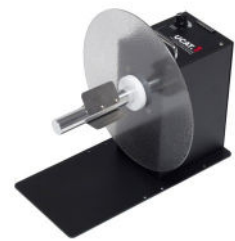
Free consultation 1-877-833-7149
www.labelmateusa.com

Non-Powered Label Unwinders UCAT-S / UCAT-1

Non-powered Unwinders require your printer to pull the labels off the roll and into your printer.

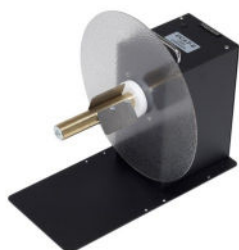
To reduce wear and tear on your printer, and for larger label rolls, choose a Powered Unwinder from page 23 rather than a Non-powered Unwinder.

Inner Flanges are included with all Unwinders. Outer Flanges are optional.



UCAT-1-STANDARD
with 6" fin-style
Core Holder

CORE DIA.	LABEL WIDTH	ROLL DIA.	NON-POWERED HEAVY-DUTY UNWINDERS	MODEL	ADD SUFFIX	PRICE
1" (26-mm)			6" wide <i>Fin-Style</i> Core Holder. Adjustable "Speed-Proportional Frictionless Braking" [™] .	UCAT-1	-1-INCH	\$595
1" to 4"			1" to 4" Adjustable Core Holder.		-ACH	\$895
3" (76-mm)	Up to 6" (152-mm)	Up to 12" (305-mm)	Economy 6" wide <i>Fin-Style</i> Core Holder. Limited non-adjustable braking.	UCAT-S	-	\$295
			6" wide <i>Fin-Style</i> Core Holder. Adjustable "Speed-Proportional Frictionless Braking" [™] .	UCAT-1	-STANDARD	\$595
		6" wide "Quick-Chuck" Core Holder.	-CHUCK		\$845	
		Up to 16" (400-mm)	6" wide <i>Fin-Style</i> Core Holder.		-R16	\$795
	6" wide "Quick-Chuck" Core Holder.		-R16-CHUCK		\$1,045	
	Up to 8.6" (220-mm)	Up to 12" (305-mm)	8.6" wide "Quick-Chuck" Core Holder.		-CHUCK-220	\$905
		Up to 16" (400-mm)	8.6" wide <i>Fin-Style</i> Core Holder.		-R16-CHUCK-220	\$1,105
	Up to 10" (254-mm)	Up to 12" (305-mm)	10" wide <i>Fin-Style</i> Core Holder.	-W10	\$695	
			10" wide "Quick-Chuck" Core Holder.	-CHUCK-10	\$965	
	OPTIONS FOR UCAT UNWINDERS				PART #	PRICE
N/A	Up to 12" (305-mm)	Optional Outer Flange . fits Fin-Style Core Holder.		FLANGE, 12	\$50	
		Optional Outer Flange and Hub . fits 3" diameter "Quick-Chuck".		FLANGE, OUT, QC-12	\$50	
	Up to 16" (400-mm)	Optional Outer Flange and Hub . fits 3" diameter "Quick-Chuck".		FLANGE, OUT, QC-16	\$80	
	Up to 12" (305-mm)	Adjustable Paper Guide . - Use with any roll up to 12" diameter. Guides the outer edge of the label web to ensure an even roll edge.		APG-CAT	\$55	



The economical UCAT-S



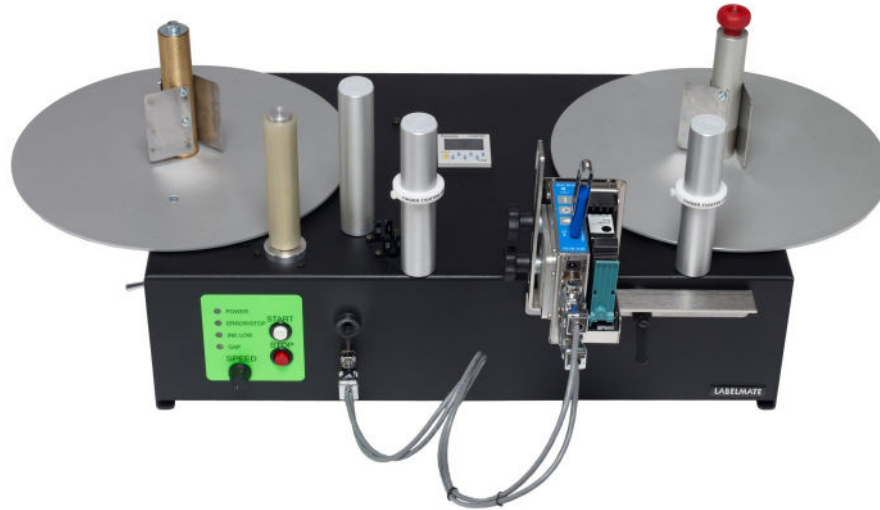
The UCAT-1-ACH with Adjustable Core Holder

Free consultation 1-877-833-7149
www.labelmateusa.com

Complete Reel-to-Reel Inkjet Label Printer

Model P-300

**A revolutionary Print Solution for Production Applications.
Print or over-print labels at high-speed and low cost.**



New & Hot!

The P-300 with included Controller, Print-head and USB Key

The new LABELMATE USA **P-300 Reel-to-Reel Inkjet Label Printer** is a combination of the well-known LABELMATE USA **PM-300** Printer Mechanism and a versatile Controller and Print Head Module. The system uses reliable HP TIJ 2.5 Ink Jet technology with a wide variety of available inks in standard HP-45 style Inkjet Cartridges. The low-cost of the consumable makes the machine very economical and ecologically friendly. The large variety of readily-available ink types allows you to choose the best cartridge for a specific job.

The system can print a roll of labels of 11.8" (30-cm) diameter, in less than 5-minutes with a resolution of up to 300x150 DPI. For resolution up to 300 DPI, choose the Low-Speed Model (P-300-LS) that can print the same size roll in just under 8-minutes.

The **P-300** can print labels with messages of up to ½" (12.7mm) high, the size of the Print Head. It is the ideal machine for adding variable data to pre-printed labels at low cost and high speed.

Print files are generated on a standard personal computer using the included software and then conveniently transferred to the **P-300** Print-head Controller using the included USB Flash Drive. The layout can be saved to the Controller's internal memory and the USB key removed.

**Free consultation 1-877-833-7149
www.labelmateusa.com**

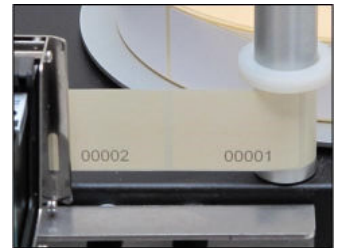
P-300 Reel-to-Reel Inkjet Label Printer

PRINTHEAD CAPABILITIES:

- Print text, graphics, barcodes, variable counts, dates and times. Rotate, & scale text and graphics.
- The included Software is fully UNICODE-compatible.
- Counter and dates can print digits in Roman, Arabic, Farsi or other user-defined characters.
- Low-ink alarm with user-definable level.
- Maximum print height of 1/2" (12.7-mm) is defined by the Print Head.
- User-definable resolutions: 300x300, 300x150, 150x150, 150x75 and 75x75 dpi.
- The print head can be positioned to print anywhere on a label approximately 4" x 5-1/2" (100-mm x 140-mm).
- Isolation between the label layout design and printer operation prevents the operator from altering or accidentally destroying the print layout.
- A purge function can be activated remotely using a digital input.

HARDWARE SPECIFICATIONS:

Detail: P-300 overprints variable data on existing labels at high speed.



- Maximum roll diameter: 11.8" (300-mm).
- Maximum label width: 5" (130-mm).
- Maximum label roll weight: 15.4 pounds (7-kg).
- Maximum speed:
 - P-300-LS: 50-ips (130-cm/sec.) Low-speed Model (Resolution up to 300x300 dpi)
 - P-300-HS: 92-ips (235-cm/sec.) High-speed Model. (Resolution up to 300x150 dpi).
- Standard 3-in.(76-mm) unwind and 3-in.(76-mm) rewind core holders.
- Rewind "out" or "in".
- Power: 100- 240V, 50-60Hz.
- With compatible ink and liner paper, the **P-300** can also print on the label liner.
- A black Inkjet Cartridge and a Cartridge Protection Clip are included.

This is a complete solution.

Choose the HP Inkjet Cartridges of your choice for your production applications.

The P-300 is backed by LABELMATE USA's famous 3-Year Parts and Labor

Limited Warranty assuring you reliable service.

DESCRIPTION	MODEL	SPECIAL INTRODUCTORY PRICING
Reel-to-Reel Print Mechanism with Controller, Software, and Print Head. For resolutions up to 300x150-dpi.	P-300-HS	\$5,395
Reel-to-Reel Print Mechanism with Controller, Software, and Print Head. For resolutions up to 300x300-dpi.	P-300-LS	\$5,395

Internet Link: [HP TIJ 2.5 Ink Cartridge Family and HP TIJ 2.5 Industrial Ink Selection Tool](#)

Note: The **P-300** has components originating in Belgium, Denmark, the United States and other countries.

Free consultation 1-877-833-7149
www.labelmateusa.com

Reel-to-Reel Printer Transport Mechanism

Reel-to-Reel Label Transport / Print Mechanism for Inkjet Heads

PM-300

- Conveniently and economically print or over-print labels using your preferred inkjet head.
- Built-in Encoder has a linear resolution of 0.0016" supporting up to 600-dpi print densities.
 - Full status indicators and control features.

The PM-300 is an ideal table top platform for OEM label transport applications that use an inkjet head (user-supplied).

A good source for inkjet heads and controllers is HSA USA.
(www.hsausa.com or 800-298-8936)



PM-300 with Counter

CONTROLS

- Start / Stop
- Print / Test
- Counter Reset
- Speed Control
- Rewind Direction
- Stop or Warning on Ink Low Condition



PM-300 with HMB-HSA

KEY FEATURES

- | | |
|--|--|
| <ul style="list-style-type: none"> • Resolution 0.0016" (0.0407-mm). • Maximum roll diameter: 11.8" (300-mm). • Maximum weight: 13.2 lbs. (6-Kg). • Label width: up to 4.5" (115-mm). • Speed: <ul style="list-style-type: none"> Maximum 59-ips (1500-mm/second) Approximately 7-minutes to run a 10" (254-mm) diameter roll of labels with a 3" core at full speed. Average Speed: 39-ips (1.0-m/second). | <ul style="list-style-type: none"> • Rugged Construction. • Secured DB-9 Print Head Connector. • Adjustable Label Guide. • Encoder Output: 0-15V Square Wave. • Label Sensor: Open Collector Output. • Worldwide 100-240V – 50-60Hz Input. • OEM Quantity Discounts available. • 3-year Parts and Labor Limited Warranty |
|--|--|

Custom versions available to customer requirements.

DESCRIPTION	MODEL	PRICE
Reel-to-Reel Print Mechanism. User-supplied Print Head.	PM-300-LS	\$2,795
OPTIONS FOR PRINT MECHANISMS	PART #	PRICE
High-Speed Option – Maximum Speed: 87-ips, (2,200 mm/sec.), Average Speed: 48-ips (1.25-m/sec). Approximately 4-5 minutes to print a 10" diameter roll of labels at full speed. Do not order this option unless you intend to operate the PM-300 only at High Speed.	UPG-HS	\$200
6-digit non-scaling Preset Counter for opaque labels.	PC-1	\$395
Mounting Bracket and Cable for HSA Print Head and Controller.	HMB-HSA	\$135

Free consultation 1-877-833-7149
www.labelmateusa.com

Complete Heavy-Duty Dual-Spindle TWIN-SLIT Slitting Packages

The TWIN-SLIT Slitting Packages simplify setup and provide maximum slitting power.

Two powered spindles on the **TWIN-CAT-3-CHUCK** provide more power and convenience in multi-core rewind / slitting applications.



- You place each successive Core on the opposite spindle.
- Easy Slitter set-up saves time.
- You don't need to use Separator Plates as the rewound rolls are not immediately adjacent to each other.

TWIN-SLIT-100-DELUXE PACKAGE
with Optional PC-1 Counter

TWIN-SLIT-100-DELUXE						DESCRIPTION
CORE DIA.	MAX. MATERIAL WIDTH	MIN. MATERIAL WIDTH	MAX. ROLL DIAMETER	NO. OF BLADES	PRICE	
3" (76-mm)	6" (153-mm)	0.5" (12.5-mm)	8.6" (220-mm)	2	\$3,195	Complete Slitting Package with Adjustable Web-Tension Control and: <ul style="list-style-type: none"> • Powered TWIN-CAT-3 Rewinder • Powered CAT-3 Unwinder • Three Quick-Locking Core Chucks (C76-170) • Inner and Outer Guide Flanges • Locking Bar • HSB-10 Pack of Replacement Blades

TWIN-SLIT-200-DELUXE						DESCRIPTION
CORE DIA.	MAX. MATERIAL WIDTH	MIN. MATERIAL WIDTH	MAX. ROLL DIAMETER	NO. OF BLADES	PRICE	
3" (76-mm)	10" (254-mm)	0.5" (12.5-mm)	8.6" (220-mm)	3	\$3,595	Complete Slitting Package with Adjustable Web-Tension Control and: <ul style="list-style-type: none"> • Powered TWIN-CAT-3 Rewinder • Powered CAT-3 Unwinder • Three Quick-Locking Core Chucks (C76-270) • Inner and Outer Guide Flanges • Locking Bar • HSB-10 Pack of Replacement Blades

PLEASE SEE PAGES 30 – 31 FOR OPTIONAL COUNTER MODULES AND OTHER ACCESSORIES THAT MAY BE ADDED TO YOUR SLITTING PACKAGE

*Labels and cores are not included with Slitting Packages.

Free consultation 1-877-833-7149
www.labelmateusa.com

Complete Off-Line Slitting Packages

**Complete money saving off-line production Slitting Packages with Unwinder and Rewinder.
See also the TWIN-SLIT-100 & TWIN-SLIT-200 Slitter Packages on page 28.**



SLIT-100-DELUXE PACKAGE
with Optional PC-1 Counter



SLIT-200-DELUXE PACKAGE
with Optional PC-1 Counter

SLIT-100-DELUXE						DESCRIPTION
CORE DIA.	MAX. MATERIAL WIDTH	MIN. MATERIAL WIDTH	MAX. ROLL DIAMETER	NO. OF BLADES	PRICE	
3" (76-mm)	6" (153-mm)	0.5" (12.5-mm)	12" (305-mm)	2	\$2,750	Complete Slitting Package with Adjustable Web-Tension Control and: <ul style="list-style-type: none"> • Powered CAT-3 Rewinder • Powered CAT-3 Unwinder • Three Quick-Locking Core Chucks (C76-170) • Inner and Outer Guide Flanges • Locking Bar • 12" Separator Plates - 1 Aluminum, 2 Plastic • HSB-10 Pack of Replacement Blades

SLIT-200-DELUXE						DESCRIPTION
CORE DIA.	MAX. MATERIAL WIDTH	MIN. MATERIAL WIDTH	MAX. ROLL DIAMETER	NO. OF BLADES	PRICE	
3" (76-mm)	10" (254-mm)	0.5" (12.5-mm)	12" (305-mm)	3	\$3,150	Complete Slitting Package with Adjustable Web-Tension Control and: <ul style="list-style-type: none"> • Powered CAT-3 Rewinder • Powered CAT-3 Unwinder • Three Quick-Locking Core Chucks (C76-270) • Inner and Outer Guide Flanges • Locking Bar • 12" Separator Plates - 1 Aluminum, 3 Plastic • HSB-10 Pack of Replacement Blades

PLEASE SEE PAGES 30 – 31 FOR OPTIONAL COUNTER MODULES AND OTHER ACCESSORIES THAT MAY BE ADDED TO YOUR SLITTING PACKAGE

*Separator plates keep the slit label rolls from interleaving or telescoping.
Labels and cores are not included with Slitting Packages.

Free consultation 1-877-833-7149
www.labelmateusa.com

Label Slitters

Slit your labels (as many as 3-across) in-line as you rewind them from your printer, or slit them off-line using an Unwinder and a Rewinder! See the previous pages for complete money saving off-line production Label Slitting Packages with Unwinder and Rewinder.



S-100 Slitter



S-200 Slitter

SLITTER UNITS REQUIRE A CAT-3 OR TWIN-CAT-3 REWINDER & PRINTER OR REWINDER & UNWINDER. THE REWINDER PULLS THE LABEL WEB THROUGH THE CUTTING BLADES.

SLITTER MODEL	S-100	S-200
PRICE	\$495	\$695
NUMBER OF BLADE HOLDERS & BLADES SUPPLIED	2	3
MAX NUMBER OF BLADES WHEN IN LINE WITH PRINTER	3	3
MAXIMUM LABEL WIDTH	6" (152-mm)	10" (254-mm)
MINIMUM LABEL WIDTH	1/2" (12.7-mm)	1/2" (12.7-mm)
ADJUSTABLE LABEL WEB GUIDE RINGS	YES	YES
OPTIONAL COUNTER MODULES FOR OPAQUE LABELS	PC-1	PC-2
PRICE (COUNTERS ARE FACTORY INSTALLED ONLY)	\$395	\$495
ALL DIGITAL 6-DIGIT LED COUNTER	YES	YES
PRE-SET COUNT STOPS CAT-3 REWINDER	YES	YES
COUNTS UP OR DOWN	YES	YES
PROGRAMMABLE SCALING COUNTER	NO	YES
COUNTS BUTT-CUT LABELS (NO GAP)	NO	NO
COUNTS RFID TAGS	OPAQUE W/GAP	OPAQUE W/GAP
MEASURES LINEAR LENGTHS	NO	NO

Free consultation 1-877-833-7149
www.labelmateusa.com

Separator Plates and Accessories

Use Label Separator Plates when Slitting

Separator Plates on your CAT-3-CHUCK make removal of burst or slit rolls easy!



- Label Separator Plates keep burst or slit label rolls from interleaving or telescoping.
- Use an Aluminum Separator Plate for the Inner Plate to make removal of the slit label rolls easy. No Outer Plate is needed as the Rewinder Outer Flange serves this purpose.
- Use thin Plastic Plates equal to the number of cutting blades in-between slit rolls.




ALUMINUM SEPARATOR PLATES

CORE DIAMETER	ROLL DIAMETER	ALUMINUM PART #	PRICE
1" (25-mm)	8.6" (220-mm)	SP-25-220AL	\$25
1.5" (38-mm)		SP-38-220AL	\$25
3" (76-mm)	8.6" (220-mm)	SP-76-220AL	\$25
	12" (300-mm)	SP-76-300AL	\$35
	16" (400-mm)	SP-76-400AL	\$50
40-mm	8.6" (220-mm)	SP-40-220AL	\$25

PLASTIC SEPARATOR PLATES

CORE DIAMETER	ROLL DIAMETER	PLASTIC PART #	PRICE
1" (25-mm)	8.6" (220-mm)	SP-25-220PL	\$25
1.5" (38-mm)		SP-38-220PL	\$25
3" (76-mm)	8.6" (220-mm)	SP-76-220PL	\$25
	12" (300-mm)	-	-
	16" (400-mm)	-	-
40-mm	8.6" (220-mm)	SP-40-220PL	\$25

ADDITIONAL ACCESSORIES

DESCRIPTION		NOTES	PART #	PRICE
Additional Blade Holder Assembly with Precision High-Speed Blade.		For Slitters and Slitting Packages	BH-1	\$50
Pack of 10-Precision High-Speed Blades for S-100, S-100-SP and S-200.		Supplied in a convenient dispenser	HSB-10	\$25
Adjustable Locking Bar to lock Unwinder, Slitter (or Counter) and Rewinder together in position.		For S-100, S-200, C-100, C-200	LOCKING BAR	\$50

Free consultation 1-877-833-7149
www.labelmateusa.com

Heavy-Duty “Quick-Chuck”™ Quick-Locking Core Chucks



LABELMATE USA’s “Quick-Chuck” family

DESCRIPTION	MAX. WIDTH*	CORE DIA.	PART #	PRICE
<p>“Quick-Chucks” are precise, maintenance-free Core Chucks for quick loading and unloading of label rolls. They are well suited for in-house projects and provide an easy, rugged solution for OEM applications.</p> <p>“Quick-Chucks” are covered by a 3-Year Parts and Labor Limited Warranty.</p> <p>Ideal for heavy rolls and production operations.</p> <ul style="list-style-type: none"> All “Quick-Chucks” fit a 0.625” diameter shaft. A setscrew locks the “Quick-Chuck” to the flat on the shaft. “Quick-Chucks” are supplied with an Allen wrench for the setscrew. “Quick-Chucks” are standard on premium models of LABELMATE USA Rewinders and Unwinders. OEMs: Call or e-mail if you need a custom size or configuration. 	170-mm (6.7”)	1.5” (38.1-mm)	C1.5-170	\$295
	270-mm (10.6”)		C1.5-270	\$395
	170-mm (6.7”)	40-mm	C40-170	\$295
	170-mm (6.7”)	3” (76-mm)	C76-170	\$295
	220-mm (8.6”)		C76-220	\$395
	270-mm (10.6”)		C76-270	\$455
	330-mm (13”)		C76-330	\$525
	170-mm (6.7”)	4” (102-mm)	C100-170	\$345
“Quick-Chuck” OPTIONS FOR ADDED CONVENIENCE				
Inner Flange for 3” or 4” diameter “Quick-Chucks”. 12” diameter capacity.	FLANGE, INN, 12			\$25
Outer Flange and Hub for 3” or 4” diameter “Quick-Chucks”. 12” diameter capacity.	FLANGE, OUT, QC-12			\$50
Inner Flange for 3” diameter “Quick-Chucks”. 16” diameter capacity.	FLANGE, INN, 16			\$60
Outer Flange and Hub for 3” diameter “Quick-Chucks”. 16” diameter capacity.	FLANGE, OUT, QC-16			\$80
Adjustable Paper Guide - Use with any roll up to 12” diameter on a CAT-3 Rewinder. Guides the outer edge of the label web to ensure an even roll edge.	APG-CAT			\$55



*Maximum width of Core when no Outer Flange is used.
The Outer Flange uses 0.5” (12.3-mm) width.
The Inner Flange does not reduce effective width.

Free consultation 1-877-833-7149
www.labelmateusa.com



LABELMATE USA

Label Handling Innovations

PAYMENT

We accept  ,  , U.S. Checks, and Direct Bank Transfers. Prices are in U.S. Dollars, F.O.B. Henderson, NV 89014, USA. Call Toll Free **877.833.7149** or email accounting@labelmateusa.com to apply for Net 30 Day Terms (U.S. Businesses OAC) or to make other payment inquiries.


SHIPPING

We ship via  ,  , and most other freight carriers. Shipping charges cover freight, handling and insurance. Collect shipments are available with a valid shipping account number when carrier regulations permit.

RETURNS & EXCHANGES

A Return Materials Authorization (RMA) is required for all product returns and/or exchanges. Call Toll Free **877.833.7149** or email info@labelmateusa.com to obtain an RMA. We are proud of our reputation for quality and excellent products, and if for any reason you are not satisfied with your purchase you may return it in new condition in the original carton and packaging within ten (10) days of receipt for credit or exchange. All returned products are subject to a restocking fee, and shipping charges are non-refundable.

PRODUCT INFORMATION

All LABELMATE USA Products are proudly manufactured in the USA  unless otherwise noted. All products are RoHS compliant, and are UL, CSA and/or CE approved/certified as applicable.



Unless otherwise specified, all LABELMATE USA products are for 120V 60-Hz. Models for 220V-240V 50-Hz are also available at the same price upon request.

CONTACT

- ◆ Toll Free: 877.833.7149
- ◆ Direct: 702.435.8535
- ◆ Fax: 702.435.8536
- ◆ Email: info@labelmateusa.com

Thank You for Choosing LABELMATE USA!

We Appreciate Your Business!

www.labelmateusa.com



● 12A Sunset Way, Henderson NV, 89014 USA ●

www.labelmateusa.com



MADE IN THE USA

